



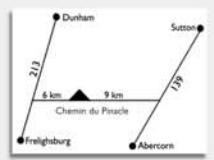
Mount Pinnacle Interpretation Trails



Légend

- Parking
- Information
- Sugarbush Trail 2,5 km
- Willow Grove Trail 1,5 km
- Interpretation Panels
- Historical Panels
- Bridge
- Picnic Area

We ask you to stay on the trails and to remain within the limits of our property.



Sources: MNR Topographic Data Base - Appalachian Corridor (ACA) Data Base

Graphic design: Montique Dupras

Mount Pinnacle Interpretation Trails



www.montpinacle.ca
nature@montpinacle.ca
Tel.: 450-522-3367

The Willow Grove and the Stream

This land was initially cleared and then allowed to go fallow. The willow grove developed here in a humid environment, favorable to quick growth. Along the trail, you will discover the stream and many vegetal species.

- 1** The Willow Grove and its Inhabitants

- 1A** Tree Swallow, House Wren, Song Sparrow

- 2** Stalked Willow

- 3** The Black Bear

- 4** Meadow-sweet

- 5** The Stone Wall

- 6** Clayton's Fern

- 7** Wild Sarsaparilla

- 8** Basswood or Linden

- 9** The American Woodcock

A non-profit organization, the Mount Pinnacle Land Trust has existed since 1991 with the aim of protecting natural sites for future generations as well as preserving the biodiversity of the planet. Created and tended by volunteers, the interpretation trails are surrounded by privately owned land. In order to avoid disturbing the ecology and maintain good relations with our neighbours, **we ask you to stay on the trails and to remain within the limits of our property.**

The trails are open from May 1st to October 31.

- 9A** Ovenbird, Veery, Warbling Vireo

- 10** Ferns, Horsetails and Club Mosses

- 11** Grey Birch

- 12** Trembling Aspen

- 13** The Stream and its Salamanders

- 14** Wild Apple Tree

- 15** Jack-in-the-pulpit

- 16** American Mountain Ash

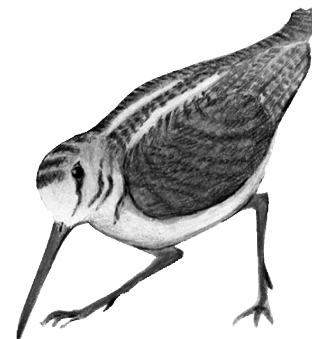
- 17** Whose track is this?

- 18** Bats

- 19** Highbush Cranberry

- 19A** Chesnut-sided Warbler, Gray Catbird, White-throated Sparrow, Alder Flycatcher

The American Woodcock



Illustrations: Micheline Laroche

The Sugarbush

After a period of commercial exploitation, the forest is in the process of cyclical regeneration. This promotes a great diversity of species as well as wildlife.

- 20** The Yellow Birch Sugarbush

- 21** Hemlock

- 22** Choke Cherry

- 23** White Pine

- 24** Pennsylvania Maple

- 24A** Red-eyed Vireo, Black-throated Warbler, American Redstart, Rose-breasted Grosbeak

- 25** Red Maple

- 26** Black Cherry

- 27** Tree-club Moss

- 28** White Ash

- 29** Sugar Maple

- 30** Soil Erosion

- 31** Early Yellow Violet

- 32** Red Spruce

- 33** Yellow Birch

- 34** Viburnum

- 35** The Windfall

- 35A** Pileated Woodpecker, Scarlet Tanager, Barred Owl

- 36** Common Wood Sorrel

- 37** Beech

- 38** Paper Birch
